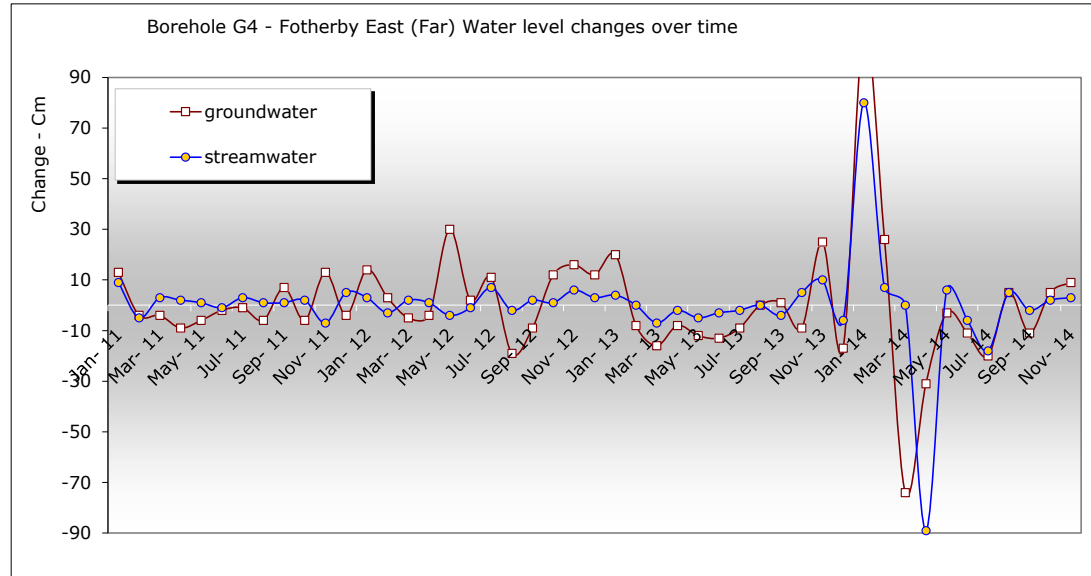


Borehole G4

Borehole G4				York Bridge 8			
well head	measured depth to ground water	absolute ground water	Change in period	York Rd op/Handrail	measured depth to stream	absolute stream water	Change in period
23.064	(OD)	(OD)		25.241	(OD)	(OD)	
Period	cms	mtrs	cms		cms	mtrs	cms
Jan-11	207	20.99	13		390	21.34	9
Feb-11	211	20.95	-4		395	21.29	-5
Mar-11	215	20.91	-4		392	21.32	3
Apr-11	224	20.82	-9		390	21.34	2
May-11	230	20.76	-6		389	21.35	1
Jun-11	232	20.74	-2		390	21.34	-1
Jul-11	233	20.73	-1		387	21.37	3
Aug-11	239	20.67	-6		386	21.38	1
Sep-11	232	20.74	7		385	21.39	1
Oct-11	238	20.68	-6		383	21.41	2
Nov-11	225	20.81	13		390	21.34	-7
Dec-11	229	20.77	-4		385	21.39	5
Jan-12	215	20.91	14		382	21.42	3
Feb-12	212	20.94	3		385	21.39	-3
Mar-12	217	20.89	-5		383	21.41	2
Apr-12	221	20.85	-4		382	21.42	1
May-12	191	21.15	30		386	21.38	-4
Jun-12	189	21.17	2		387	21.37	-1
Jul-12	178	21.28	11		380	21.44	7
Aug-12	197	21.09	-19		382	21.42	-2
Sep-12	206	21.00	-9		380	21.44	2
Oct-12	194	21.12	12		379	21.45	1
Nov-12	178	21.28	16		373	21.51	6
Dec-12	166	21.40	12		370	21.54	3
Jan-13	146	21.60	20		366	21.58	4
Feb-13	154	21.52	-8		366	21.58	0
Mar-13	170	21.36	-16		373	21.51	-7
Apr-13	178	21.28	-8		375	21.49	-2
May-13	190	21.16	-12		380	21.44	-5
Jun-13	203	21.03	-13		383	21.41	-3
Jul-13	212	20.94	-9		385	21.39	-2
Aug-13	212	20.94	0		385	21.39	0
Sep-13	211	20.95	1		389	21.35	-4
Oct-13	220	20.86	-9		384	21.40	5
Nov-13	195	21.11	25		374	21.50	10
Dec-13	212	20.94	-17		380	21.44	-6
Jan-14	102	22.04	110		300	22.24	80
Feb-14	76	22.30	26		293	22.31	7
Mar-14	150	21.56	-74		293	22.31	0
Apr-14	181	21.25	-31		382	21.42	-89
May-14	184	21.22	-3		376	21.48	6
Jun-14	195	21.11	-11		382	21.42	-6
Jul-14	215	20.91	-20		400	21.24	-18
Aug-14	210	20.96	5		395	21.29	5
Sep-14	221	20.85	-11		397	21.27	-2
Oct-14	216	20.90	5		395	21.29	2
Nov-14	207	20.99	9		392	21.32	3

MWRG takes no responsibility for the accuracy of the data contained on this sheet. All topographical survey levels, rainfall figures, on-site measurements and their graphical representations must be confirmed for their accuracy by a suitably qualified professional surveyor and engineer.



Ground level: 23.064m (OD) Stream: York Rd. top handrail 25.3m (OD)

