



# Maidenhead Waterways

*‘.. bringing the Thames into town’*

**Maidenhead Waterways Group  
Annual General Meeting  
7th November 2017**



**Jon Reekie**

**Secretary**

# **AGM 7<sup>th</sup> November 2017**

## **Agenda**

- **Welcome - Jon Reekie**
- **Approval of Minutes 01/11/16 AGM**
- **Presentation: Richard Davenport & John Morgan**
- **2016/17 Financials - David Snelgar**
- **Election of Directors/Trustees**
- **Ordinary Resolutions & reappointment of Independent Examiner**
- **AOB/Questions (... then refreshments!)**

# **Richard Davenport**

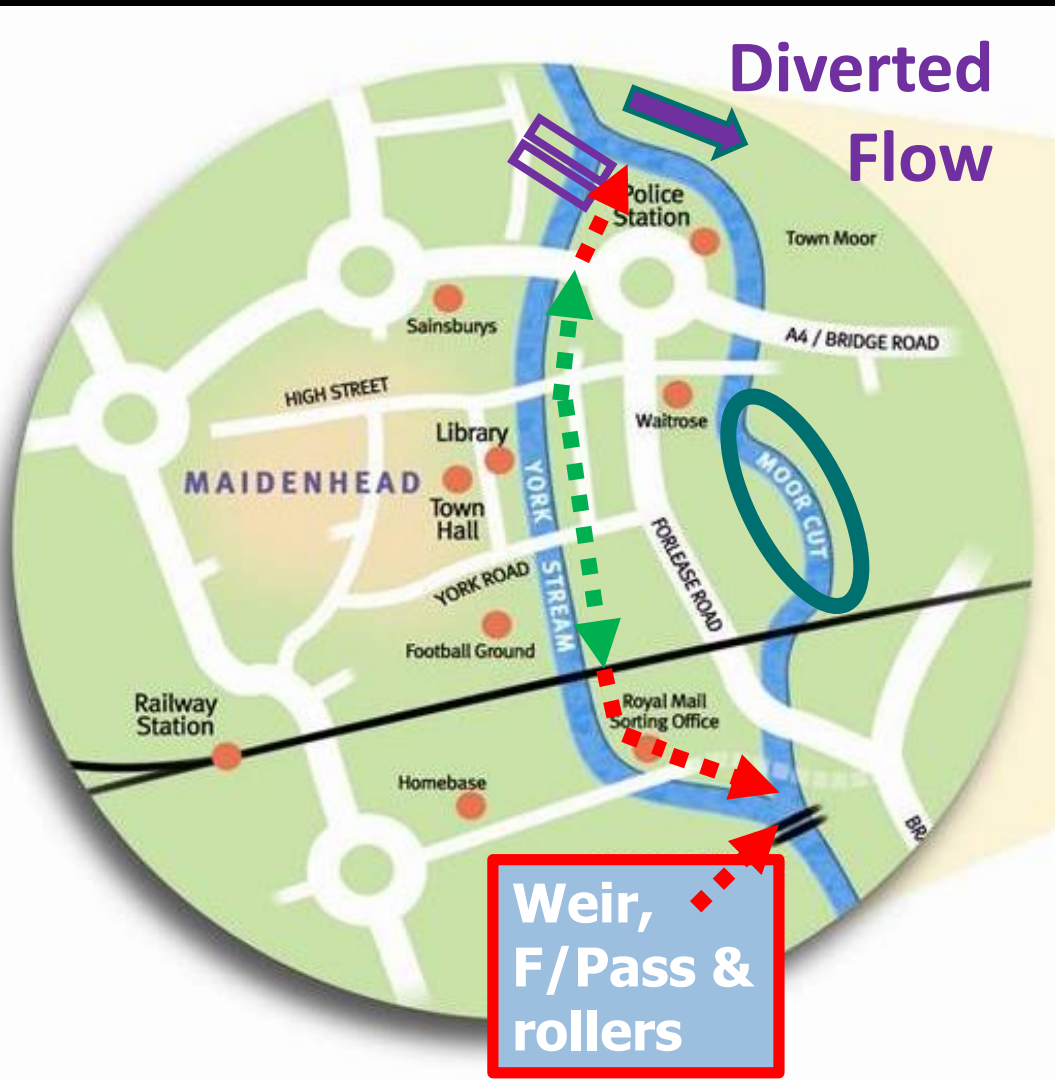
## **Chair of the Trustees**



# 2016/17 – major progress


- York Stream arm (Stages 1 & 2) nearly complete; new Library bridge; flow being returned; weir funded and to be tendered next ... filling the enlarged channels
- Impoundment licence for weir submitted
- Continued MW/RBWM partnership - £8m developer funding committed to date
- Shanly Chapel Arches (S) developments complete; c70% occupied; amphitheatre open; bridge being re-faced; Phase 3 (Colonnade and linking channel) next

# Phase 1 (the 'Ring') - staged build plan (paced by funding)



## Build Stages:

 - Temporary Dam & Flow diversion

 - Stage 1

 - Stage 2 + weir

 - Stage 3 (Moor Cut) ....not yet funded

# 2016/17 (cont.)

- Channel clearances for flow continue; more corporate teams now helping
- SEW mitigation plans to counter losses from GW pumping being developed
- RBWM committed maintenance funding; plan to be managed by MW
- Chapel Arches boat storage agreed
- Liaison with Countryside started re. York Road, Reform Rd, Magnet JV sites
- BLP consultation and next steps

# **Maidenhead Waterways in pictures**

***‘.. bringing the Thames into town’***



Google Earth  
- 2013

© SPOT IMAGE  
© 2013 Google  
**TOR  
site**

Moor Cut (empty)

York Stream

Holmanleaze

Cherwell Close





# Google Earth - 2017



York Stream

Holmanleaze

Moor Cut (flow diverted)

© SPOT IMAGE

© 2017 Google

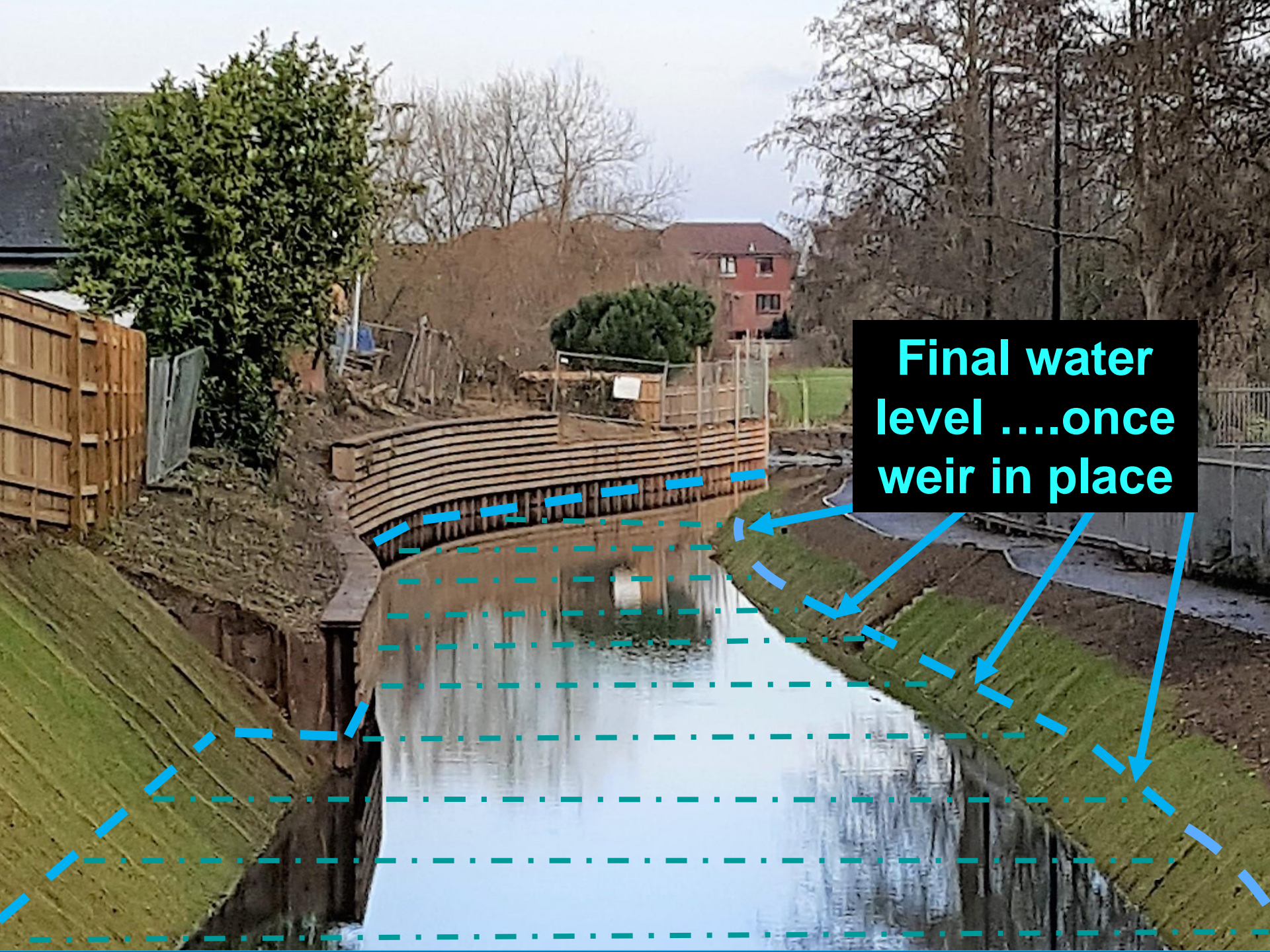
195 ft



**N of A4/Saint  
Cloud Way  
- Oct 2016**

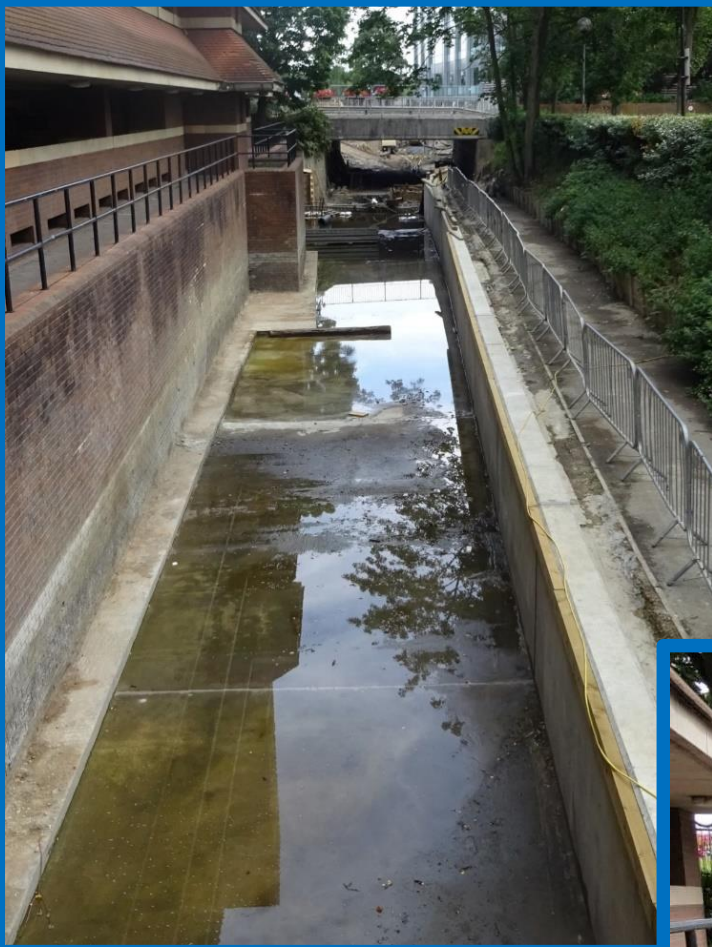




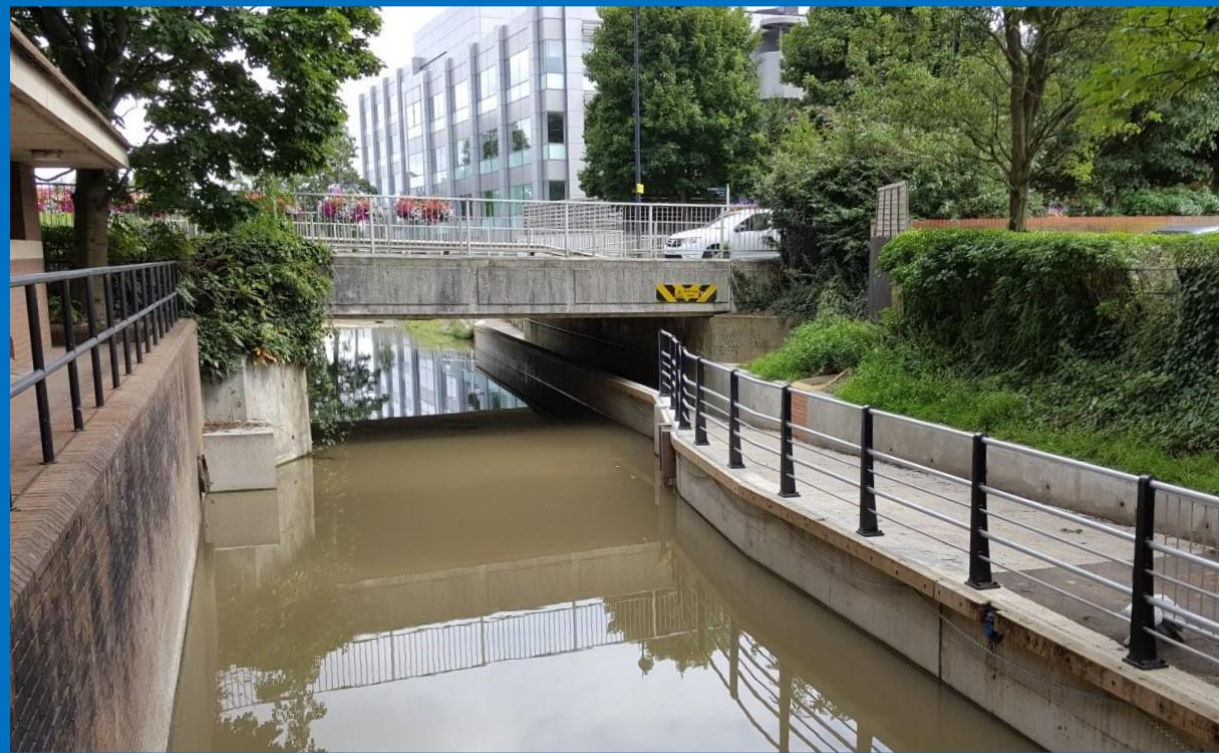
A photograph of a weir under construction. The weir structure is made of wooden slats and is partially completed. Water is flowing over the weir, creating a white, turbulent cascade. The surrounding area includes a grassy bank on the left, a wooden fence, and a residential building in the background. Overlaid on the image are blue dashed lines and arrows indicating the final water level and the weir's position.

**Final water  
level ....once  
weir in place**





**Hines Meadow car  
park - Oct 2016**



**New F/Path;  
railings &  
escape ladders  
- Oct 2017**



# Chapel Arches - 2013



**Google Earth  
- 2013**



# Chapel Arches - 2017



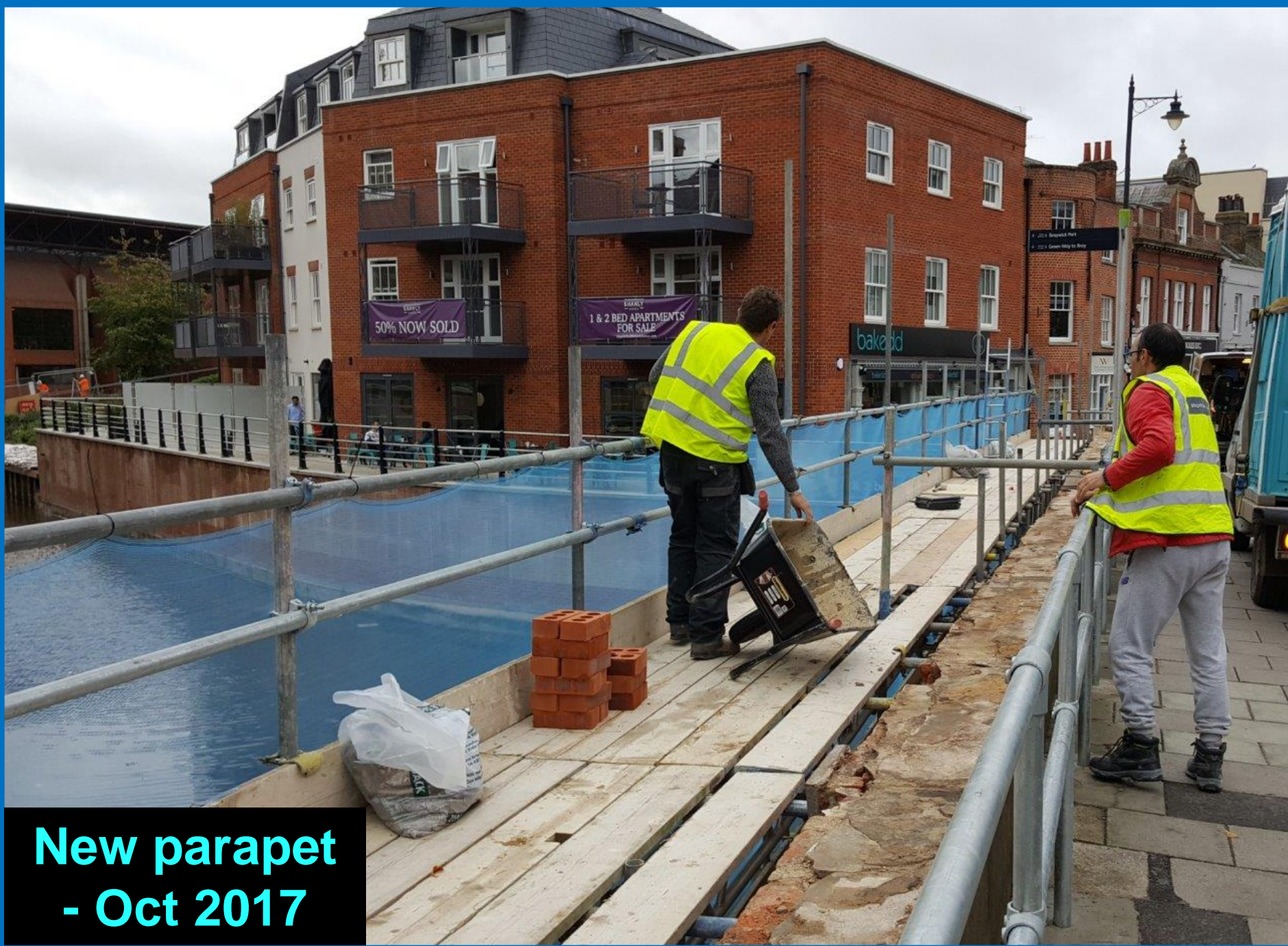
**Google Earth  
- 2017**





**CA Bridge refacing  
underway  
- Oct 2017**





**New parapet  
- Oct 2017**





**Amphitheatre - opened Nov 2016**



# Library bridge foundations - Oct 2017





# Library bridge craned in - 28<sup>th</sup> Oct 2017

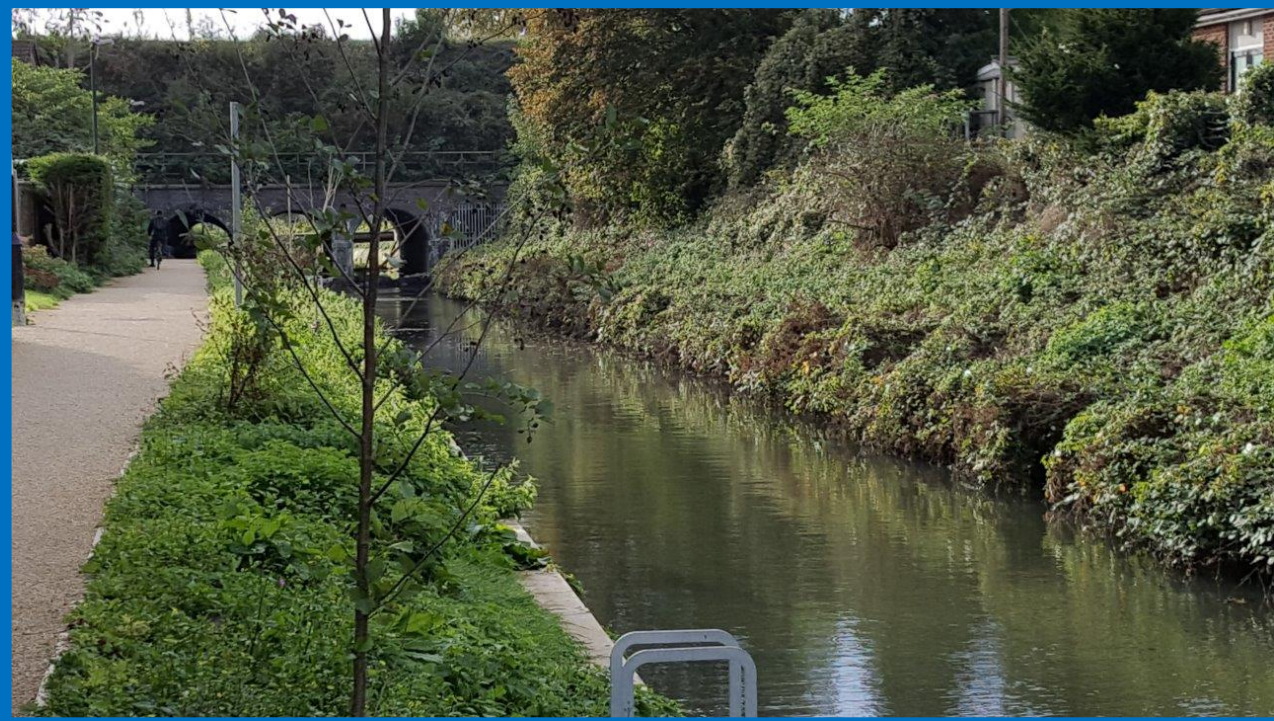






# **York Rd to GWR - Jul 2016**

**1 year on  
- Oct 2017**







**c1980**



**2013**

**Brunel's c1838  
GWR tunnels**



**Oct 2017**





**Bank construction - clay bed; GCL slope;  
soil containment grid; gravel & topsoil fill;  
finished with pre-planted coir sheeting**



# Staff/Way to G/Lane - Oct 2017. Channel enlarged; Green Way path being re-laid





# Bringing Moor Cut back to life

(view under the A4 to Moorbridge)



**2011**



**2017**





## Channel Clearances







**Alnylam**



**Taylor Woodrow**

## Corporate teams



**Suez**



**LexisNexis**





## Community Engagement







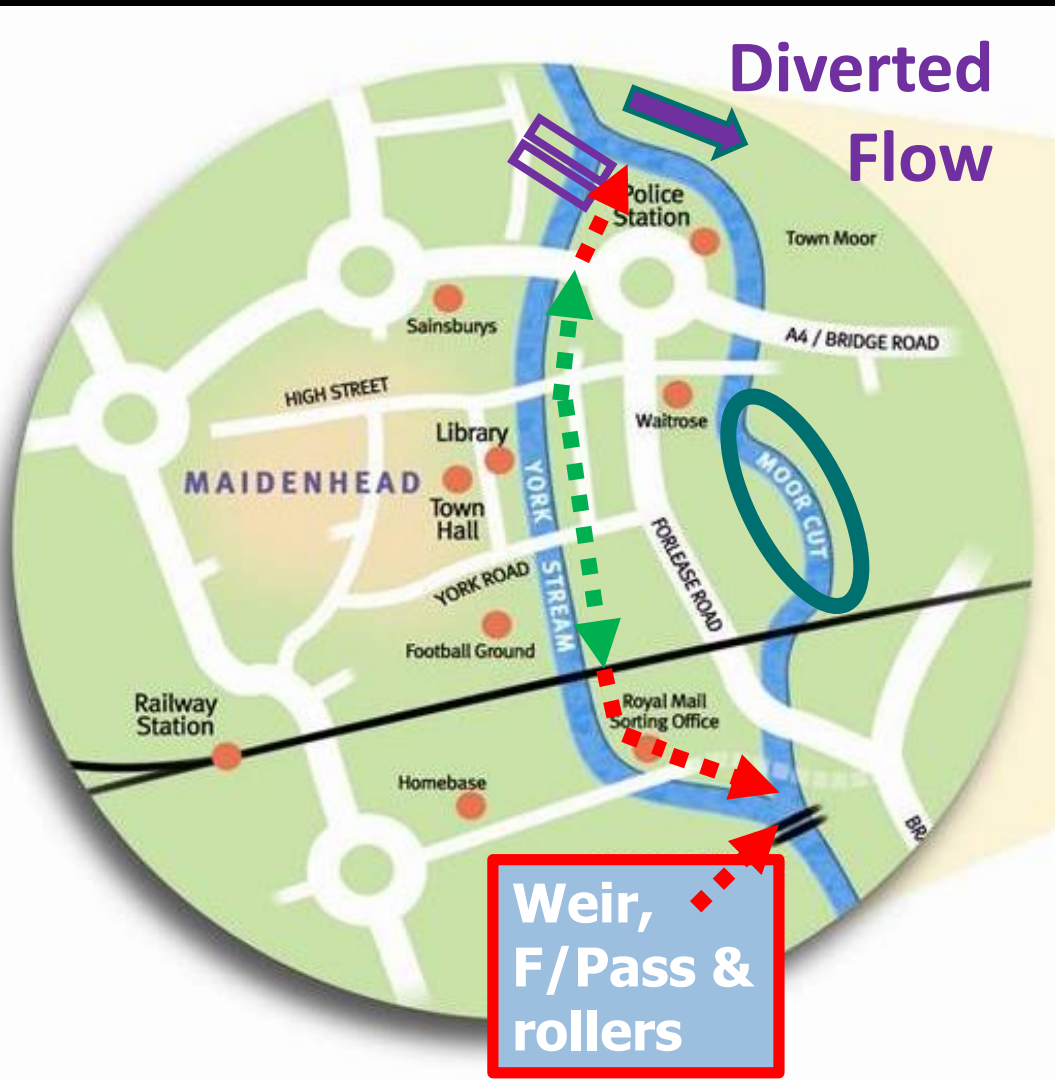
## Canoe Cavalcade






**John Morgan**  
**Chair of Technical Group**

# Phase 1 (the 'Ring') - staged build plan (paced by funding)



## Build Stages:

 - Temporary Dam & Flow diversion

 - Stage 1

 - Stage 2 + weir

 - Stage 3 (Moor Cut) ....not yet funded

# Stage 1 & 2 Programme

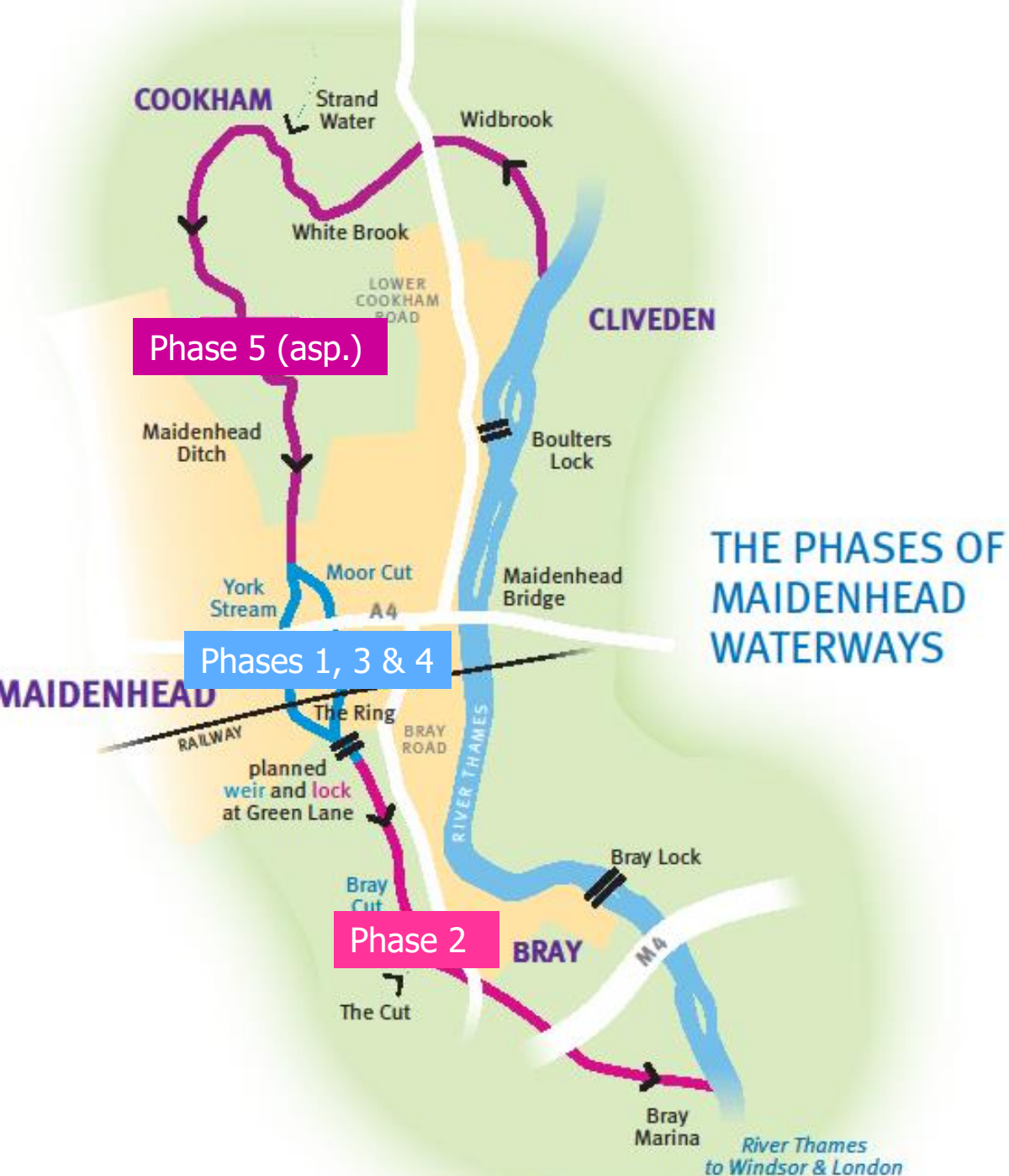
- Section A (A4 North) - *Completed*
- Section B (Hines Meadow C/Pk) - *Completed*
- Section C (CA North) - *Shanly to start 2018*
- Section D (CA to Library) - *Completed*
- Section E (Library to York Rd) - Nov 2017
- Section F (York Rd to GWR) - *Completed*
- Section G (GWR to S/Way) - Dec 2017
- Section H (S/Way to Green Lane) - Dec 2017
- Green Lane Weir/FP/Rollers - late 2018

# Technical Progress

- **Ground water & flow monitoring continue**
- **Channel clearances for flow**
- **Azolla success at NT Widbrook Common**
- **Dry season flows still threaten ecology; insufficient for future waterway needs**
- **Proposals to protect ecology & increase flows being developed with riparians, South East Water, Thames Water & RBWM**

# Future Phases

(subject to funding)



- 1 - 'Ring' for small boats 2017-2020
- 2 - Upgrade Bray Cut 2021-24
- 3 - Medium boats in Ring 2024-25
- 4 - Larger boats in Ring 2026-28
- 5 - Northern link (asp).

# Ecology/Other

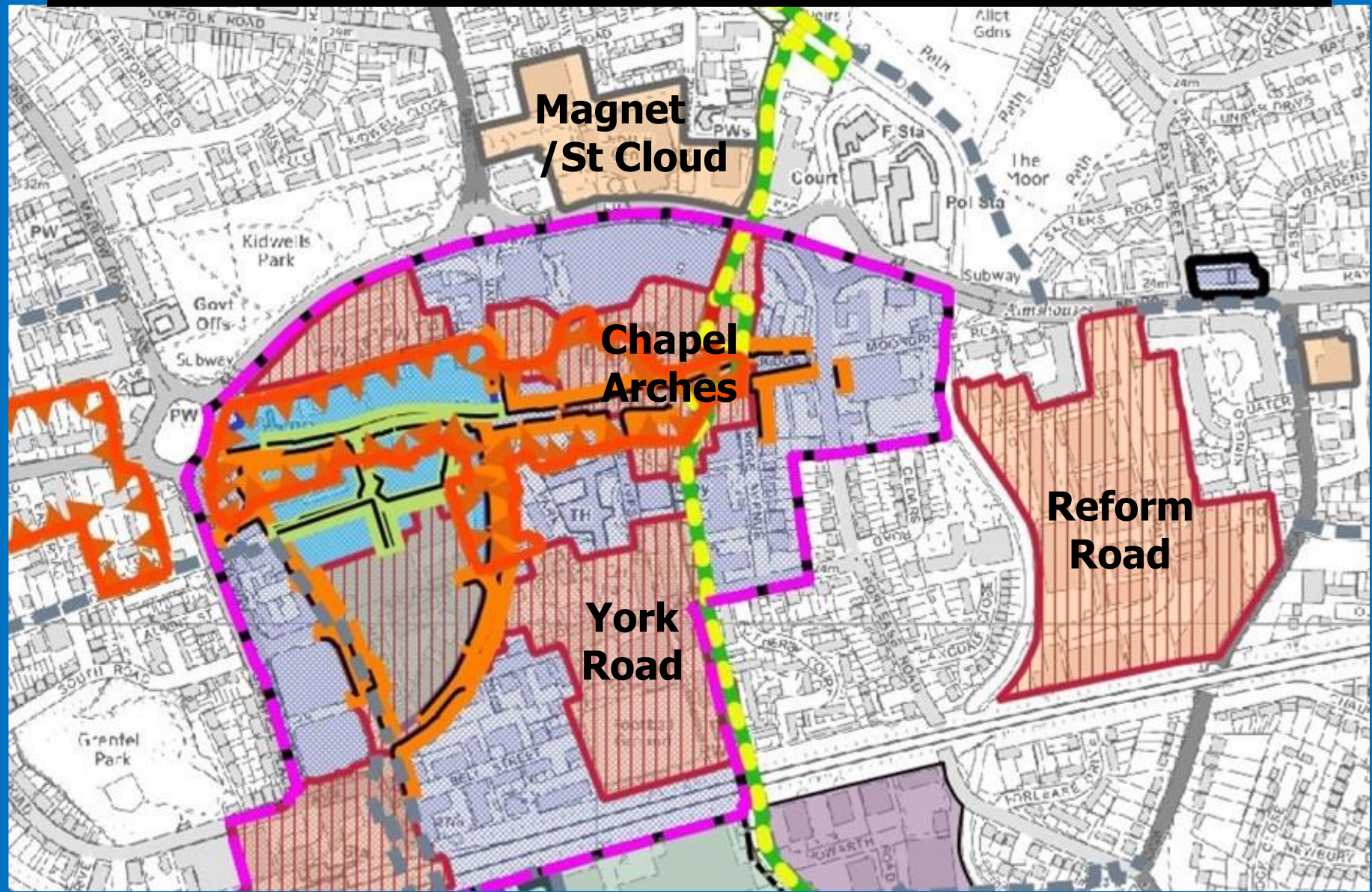
- Ecological Clerk of Works overseeing
- Moor Cut (now filled) is full of wildlife, some already back in York Stream
- Bat/bird boxes being added next...by volunteers as new sections are released
- Kingfisher perches being added
- Angling & picnic benches on banks?
- Pontoon & boat storage in CA arch(es)
- FoM pursuing enhancement projects

# Next Steps

- Complete York Stream works (2017)
- Contract Weir/FP/rollers (2018), lifting surface water level throughout town
- Complete landscaping for habitats
- Refine plans for York Rd & Reform Rd sites, with RBWM/Countryside JV
- Clear Bray Cut to connect to the Thames
- Target navigation improvements from ongoing AAP/BLP developments



# Borough Local Plan: Shanly & Countryside 'waterside' sites





# Maidenhead Waterway

*‘.. It’s for all of us’*



# **Richard Davenport**

## **Chair of the Trustees**



# Comms/Other

- Regular Flow newsletters
- MW web site updates
- Social media
- Schools; Scouts; corporates;  
MW at FoM shop in Nicholsons
- Group visits & presentations
- RBWM newspaper, local press/radio
- PRoM and Neighbourhood Plan

# **Volunteer Thanks**

- **Clearance coordination - Ian Caird**
- **Flow recording/analysis - Ian Rose**
- **Borehole dipping, Flow measurement  
Channel Clearances - many & various**
- **Social Media - Steve Carman**
- **Leaflet Supplies - Gill Chivas**
- **Web Site - Nicky Luff**
- **Video - Andrew Ingram/Michael Wadley**
- **Aerial Photos - Matthew Wilkinson**



**David Snelgar**

**Treasurer**

# 2016/17 Financials

	<u>2016/17</u>	<u>Memo:</u> <u>2015/16</u>
	£	£
<b>Incoming Resources:</b>		
Balances Brought Forward	26,324	28,040
- Donations, grants etc.	4,108	4,763
- RBWM S106 grants	63,079	54,274
- Activities & Bank Interest	0	0
<b>Resources Expended:</b>		
- Project Development/etc.	64,268	59,696
- Cost of generating funds	552	200
- Overheads & Governance	877	857
Balances Carried Forward	27,814	26,324



# Adoption of Accounts

## Resolution:

- The report of the Directors/Trustees & the Treasurer's Report & Presentation of Accounts for the year ended 31st March 2017 be accepted

# **Richard Davenport**

## **Chair of the Trustees**



# **Election of Directors/Trustees**

- **It is resolved that David Snelgar be re-appointed Director/Trustee of Maidenhead Waterways Restoration Group**
- **It is resolved that Jon Reekie be re-appointed Director/Trustee of Maidenhead Waterways Restoration Group**

# **Re-appointment of Independent Examiner**

- **It is resolved that Richard Curry be re-appointed as Independent Examiner for Maidenhead Waterways Restoration Group**



# AOB & Questions?

Then see the group's web site at

... [www.maidenheadwaterways.org](http://www.maidenheadwaterways.org)

